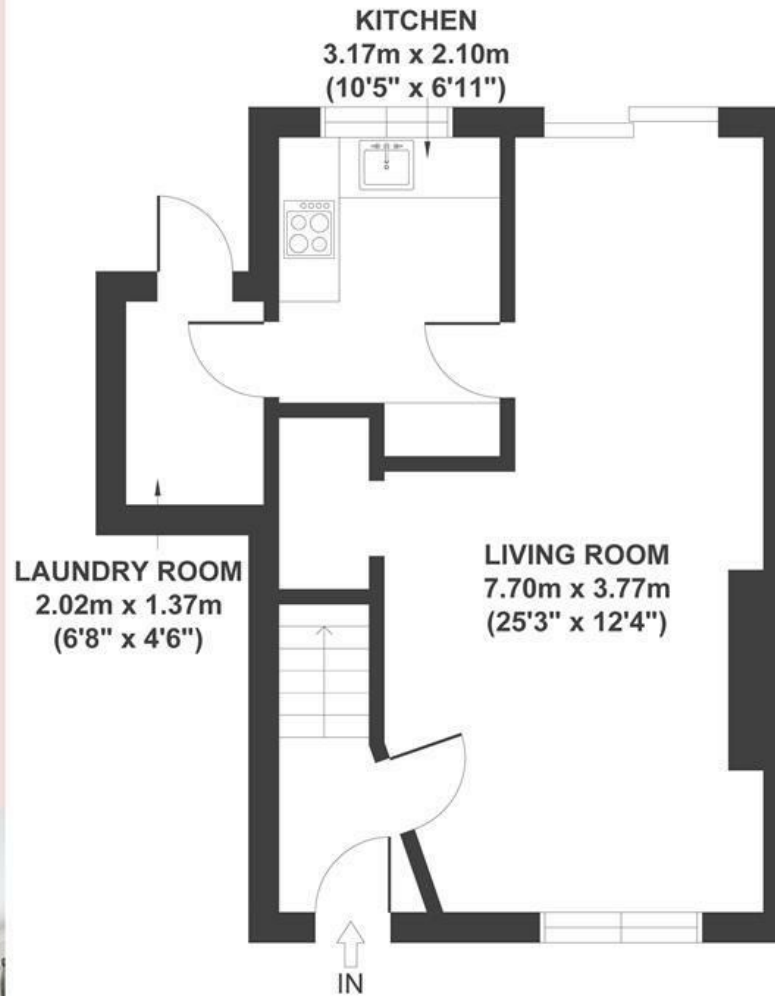


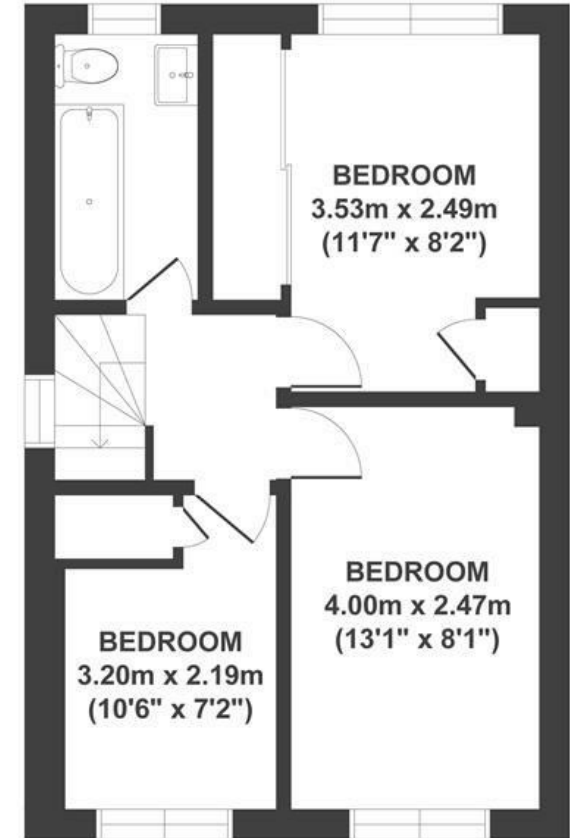
# Forest Walk

## KINGSWOOD

APPROXIMATE FLOOR AREA  
77 SQM / 829 SQFT



GROUND FLOOR



FIRST FLOOR

Boardwalk

# Forest Walk

KINGSWOOD, BRISTOL



£300,000



3 Bedrooms



BS15 8DF



1 Bathrooms

*"We absolutely loved our garden, where the sun is trapped all day long. From the morning coffees, barbecued brunches with friends to long family game evenings with the fire pit. The area is full with fantastic walks and green spaces and so so quiet."*

